

CIVIL RIGHTS

What is the governor signing in this photo?

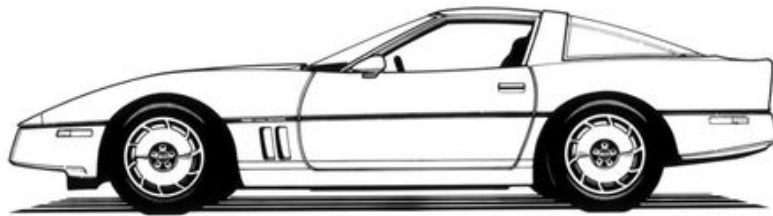
What year did the Rev. Martin Luther King Jr. speak in Frankfort?



KENTUCKY CONNECTIONS


General Motors produced this car in what Kentucky city? _____

What designs would you add to the car?



YOUR CONNECTION

If you were asked to donate something to the museum about your life, what would it be?



TAKE A TOUR OF THE OLD STATE CAPITOL

Tuesday-Saturday: 10: a.m., noon, 1:30 p.m. and 3 p.m.

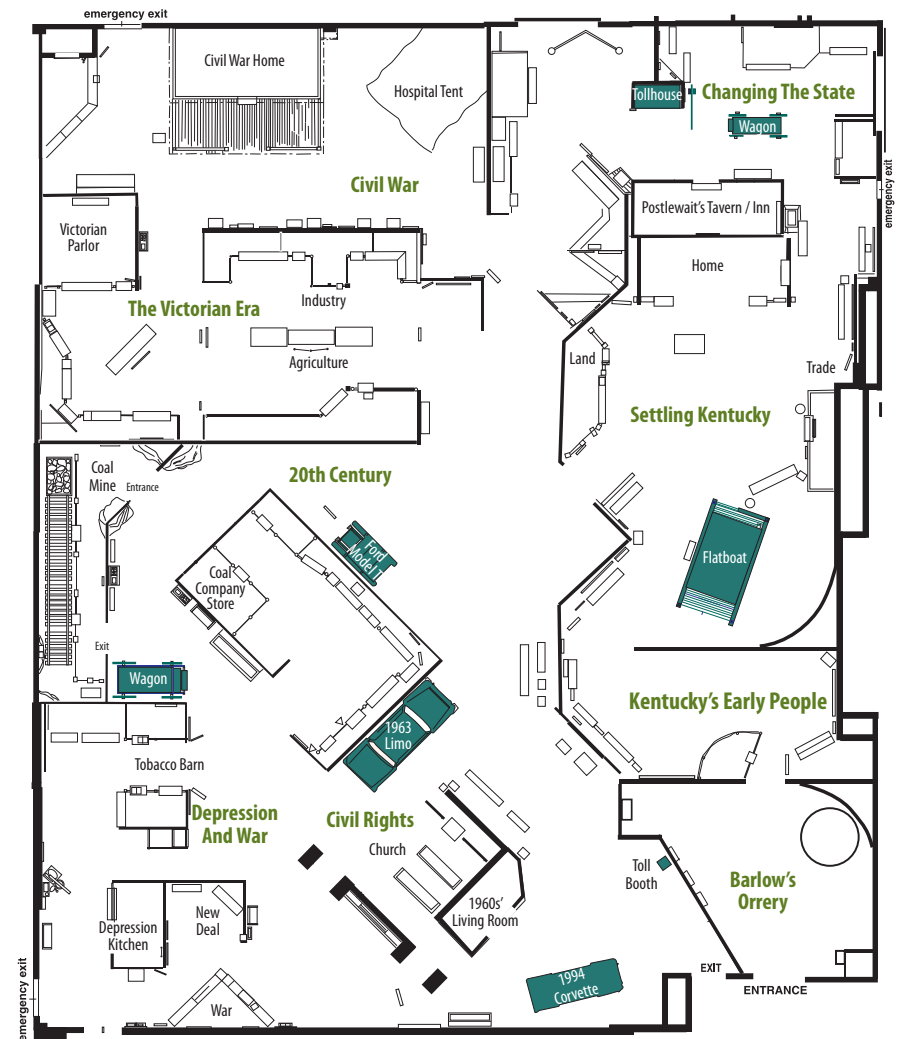
VISIT THE KENTUCKY MILITARY HISTORY MUSEUM


Tuesday-Saturday: 10 a.m.-5 p.m. (seasonal hours)



FOLLOW THIS MAP

ON YOUR JOURNEY THROUGH KENTUCKY'S HISTORY.



Look inside to start hunting for answers and artifacts. 

KENTUCKY'S EARLY PEOPLE

Find these items made by Native Americans. What natural resources did they use?





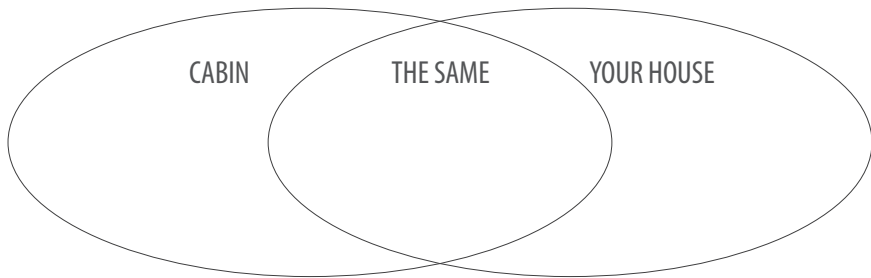
SETTLING KENTUCKY | FIND THE FLATBOAT!

Imagine you are traveling to Kentucky by water. What would you bring with you? Draw the items in the space below.



SETTLING KENTUCKY | FIND THE CABIN!

How is the cabin different from your house? How it is the same? Write or draw a comparison between the cabin and your house in the diagram below.



CHANGING THE STATE

A farrier is a craftsman who trims and shoes horses' hooves. Can you find the name for these tools he or she uses?



CIVIL WAR

Who was president of the United States during the Civil War?

Find his watch and listen to its tick.



THE VICTORIAN ERA

Step into the Great Southern Exposition and find the names for these items that once were displayed in Louisville, Kentucky.







THE 20TH CENTURY

What's my job?



In what field is my career?



Who painted this?



DEPRESSION AND WAR

Find these artifacts and draw a modern version in the empty boxes.

