

CIVIL RIGHTS



How did Charles Anderson and Georgia Davis Powers fight for civil rights in Kentucky?

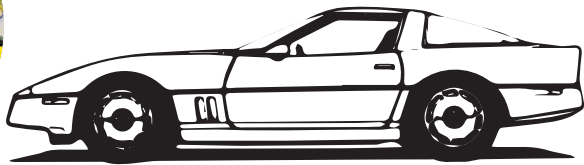


What year did the Rev. Martin Luther King Jr. speak in Frankfort?

KENTUCKY CONNECTIONS



General Motors produced this car in what Kentucky City?



What designs would you add to the car?

YOUR CONNECTION

If you were asked to donate something to the museum from your life, what would it be?

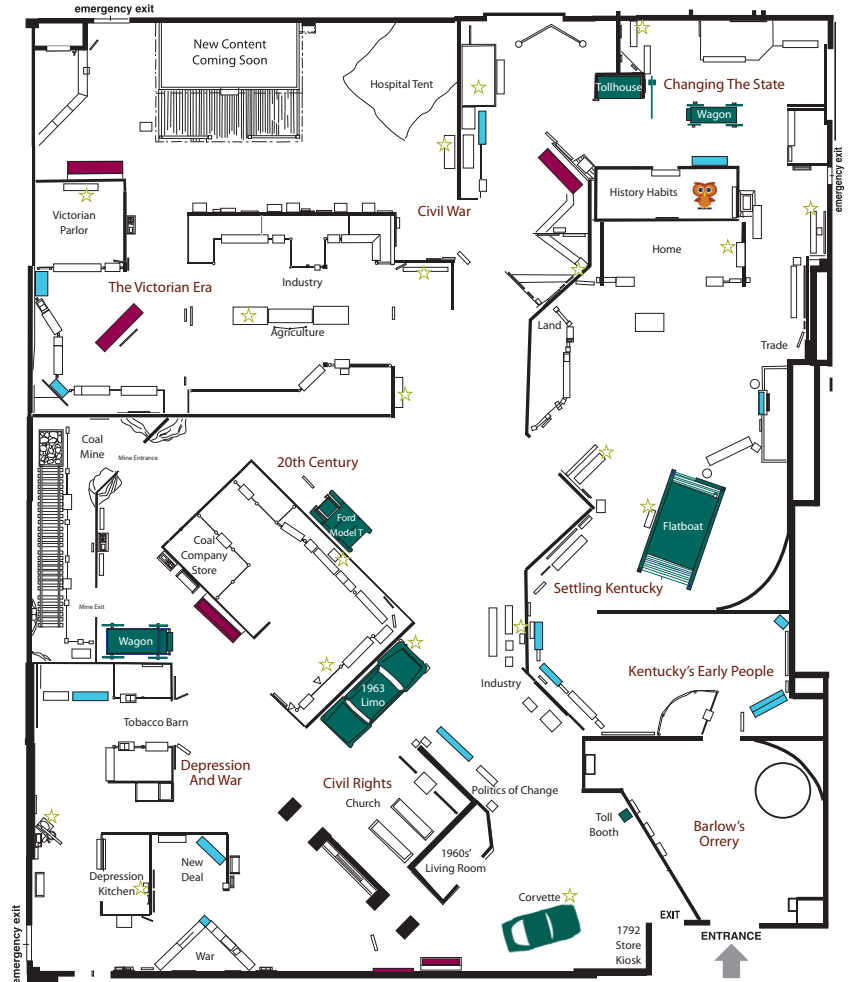


A KENTUCKY JOURNEY



Follow the map and explore Kentucky's history.

Look inside to begin a fun hunt for artifacts and answers!



Be sure to visit our other campus buildings, included with your admission!
 The Old State Capitol | The Kentucky Military History Museum | Tue-Sat: 10 am - 5 pm

KENTUCKY'S EARLY PEOPLE | Find the Map!

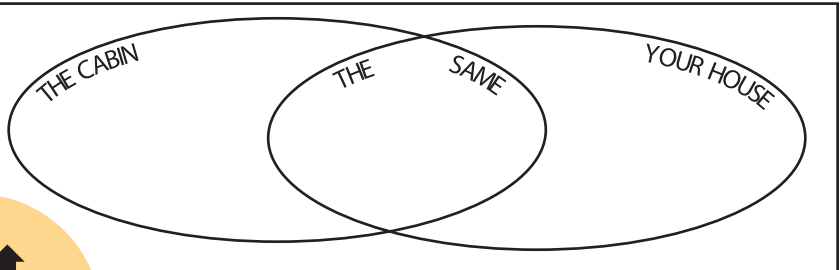
Which native communities had a presence in the region where you live?



- Paleoindian
- Archaic
- Woodland
- Adena/Hopewell
- Mississippian
- Fort Ancient

SETTLING KENTUCKY | Find the Flatboat!

Imagine you're traveling to Kentucky by water. What would you bring with you? Write or draw the items in the space below.



SETTLING KENTUCKY | Find the Cabin!

How is the cabin different from your house? How is it the same? Write or draw a comparison in the diagram above.



CHANGING THE STATE

A farrier is a craftsman who trims and shoes horses' hooves. Can you find the names of the tools they use?

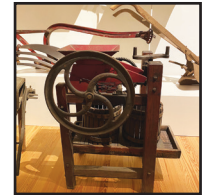
CIVIL WAR



Who was president of the United States during the Civil War?
 _____ Find his pocket watch and listen to its tick.

THE VICTORIAN ERA

Step into the Great Southern Exposition and find the names for these items that once were displayed in Louisville, Kentucky.



THE 20TH CENTURY

What is my job? How do I make a living? Write your answers below!



DEPRESSION AND WAR

Find this artifact and draw a modern version in the box to the right.

